

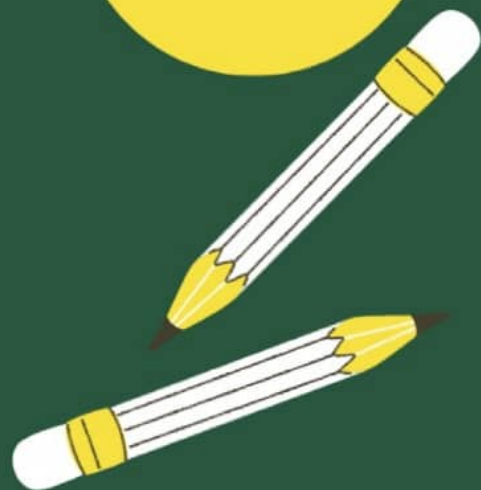
GOVT. COLLEGE ALEWA

Assandh Road, Alewa



**ADMISSION
OPEN
FROM
19TH MAY, 2025**

GOVT. COLLEGE ALEWA 2025 – 26



Courses Offered:-

- B.A. – 240 Seats
- B.Com. – 80 Seats
- B.Sc. Physical Sciences – 60 Seats
- B.Sc. Life Sciences – 20 Seats

Registration Link:

<https://admissions.highereduhry.ac.in>

OUR FACILITIES

- ✓ Well Maintained Library
- ✓ Science Laboratories
- ✓ Smart Classrooms
- ✓ NSS Unit
- ✓ Ventilated Classrooms

REGISTER NOW

FOR ANY QUERY



8901791059



www.gcalewa.ac.in

**Principal
Mrs. Veena Kumari**